

Monthly Newsletter

AUGUST 2015



Working Hours: Monday – Friday: 8am to 6pm and Saturday - 8am to 1pm

Berkeley seek to minimise disruption during construction works as much as possible. This new sletter will be emailed to all interested surrounding residents to provide regular updates and key information on the Vista project. Should you wish to be added to the email database please email vista@berkeleygroup.co.uk

Development Information

The Vista Development comprises the delivery of approximately 452 units over two buildings, Block C at the North of the Site and Block L at the South, along with ground floor retail and associated car parking.

Contacts for Berkeley Homes

For all construction & site queries contact:
Barry McDonagh on 07824417709
Jamie Street on 07917593071



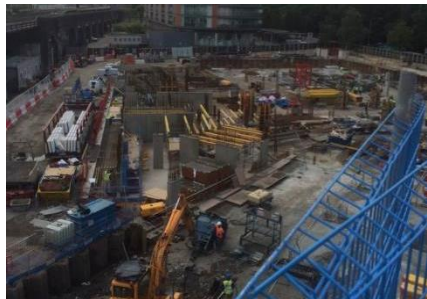
Block C has progressed on to the seventh floor on Cores 1 & 2



Balcony panel installation is progressing and has been completed on levels 5,6 & 7.



Vista CGI – View NE from Queenstown Road



The verticals on basement have commenced on Core 5, Block L.

Note

Residents Meeting

All residents are invited to a meeting in the Berkeley Marketing Suite 13th August 2015 between 6 – 7.30pm.

General Site Activities Information

- As work progresses, a substantial amount of concrete pours will be taking place over the next few months for concrete floor slabs in Block C and Block L and deliveries will be busy on Sopwith Way.
- As we progress up each level, can we politely remind those of you overlooking the site to be mindful of your privacy as the new buildings get higher, this will continue to rise rapidly.
- Wandsworth have agreed that some vehicles can unload from Sopwith Way (South Side). This is usually a stationary trailer of precast panels, which are lifted once only to their end designation.
- The south entrance (Gate 2) is now in operation to create a one way traffic system. This will be used where we can, but Sopwith Way will continue to be our primary activity for traffic and is manned.
- The final stage of ground works is ongoing along the car park / Ramp section in Block L, and we expect muck-away activities to continue. This activity is co-ordinated to prevent traffic disturbance.
- Sopwith Way road (the section from the river to the round-about alongside the railway line) will have the tarmac completed, 5 extra street lights and drainage installed and a new section of pavement built outside the Hotel. These works which are required by Wandsworth Council and started on 6th July and last a total of 8 weeks. Thames Water will also be laying new pipes at the river end of Sopwith Way. This is on programme to complete, and management of traffic and pedestrians has been going well.

