

Monthly Newsletter

December 2015



WELCOME

To our monthly newsletter about construction at Vista. This has been designed to keep you updated about our key activities on site and within the community.

Please visit our website for updates:
<http://www.vistaconstruction.co.uk/>

Berkeley seek to minimise disruption during construction works as much as possible. This newsletter will be emailed to all interested surrounding residents to provide regular updates and key information on the Vista project. Should you wish to be added to the email database please email
jamie.street@berkeleygroup.co.uk

Development Information

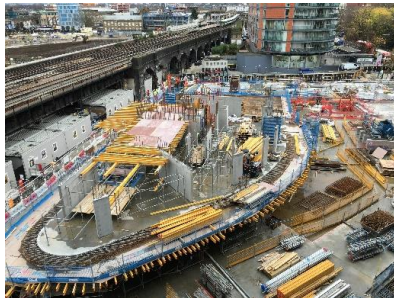
The Vista Development comprises the delivery of approximately 452 units over two buildings, Block C at the North of the Site and Block L at the South, along with ground floor retail and associated car parking.



The Vista Project is proud to sponsor local charity Thrive. Please visit their website - www.thrive.org.uk



Block C has progressed to the 14th floor (cores 1&2)



Block L has progressed to ground floor level and 1st floor (core 5)

General Site Activities Information

We have been informed that UKPN will be installing electrical ducts on Sat/Sun 5th/6th December and Sat/Sun 12th/13th December in Sopwith Way at the entrance of Battersea Dogs Home.

TC3 our 3rd Tower Crane is awaiting installation (Mid to end of December or January). This is being co-ordinated with Network Rail and will involve disruption of South Road for 2 days. We have made contact with those affected and are coming up with acceptable proposals. Further definite information will be issued nearer the time.

Wandsworth have agreed that vehicles can unload from Sopwith Way and South Road.

In order to help progress the Vista project Wandsworth Council have agreed to allow Berkeley Homes to load out materials from 6pm to 8pm. Disruption to residents will be kept to a minimum and noise will be limited to the tower cranes/hoists and the movement of materials. Managers will be on-site supervising these works and we ask that if you have any issues with these activities please contact us on the numbers provided.

The site will be open over the Christmas period although at a reduced work force. Apart from the bank holidays.

COMMUNICATIONS

To receive our newsletters please email
Carly.Brown@berkeleygroup.co.uk

SITE WORKING HOURS

Site hours are:
08:00 to 18:00 Monday to Friday
08:00 to 13:00 on Saturdays excluding Bank Holidays.

CONTACT US

Barry McDonagh
Senior Site Manager
07824417709

Jamie Street
Project Manager
07917593071

